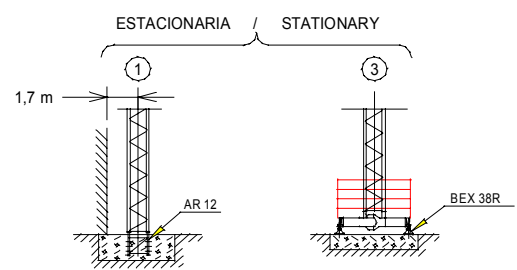
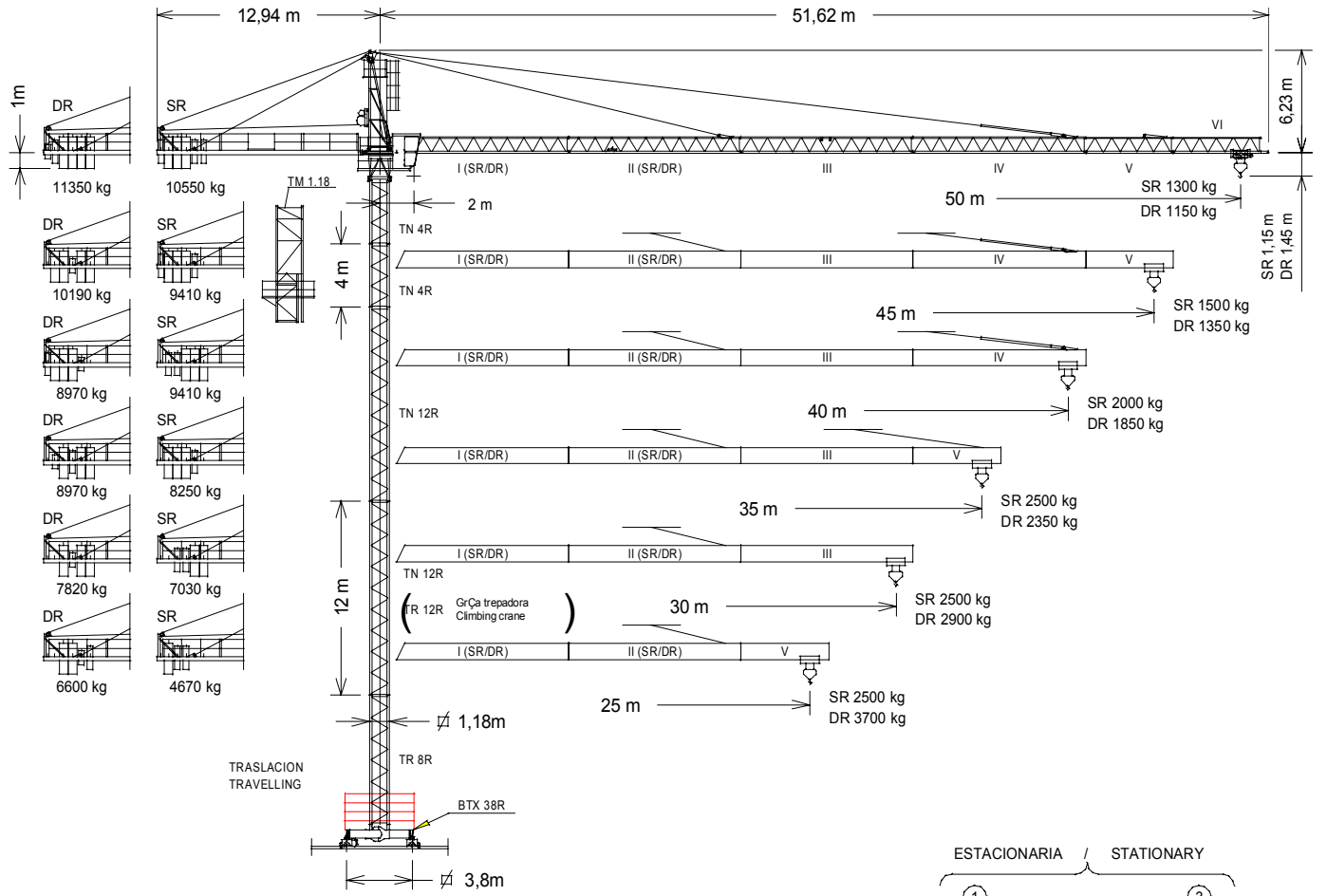


GRUA TORRE TOWER CRANE

J65MAC

De acuerdo con UNE 58-101-92 According to
DIN 15018 H1 B3
Directivas de nivel de potencia acústica / Sound power level directives
84/534/CEE & 87/405/CEE
Directivas de máquinas / Machinery directives
89/392/CEE & 91/368/CEE

SISTEMA DE CALIDAD CERTIFICADO SEGUN
QUALITY ASSURANCE SYSTEM CERTIFIED ACCORDING TO
UNE-EN-ISO 9001 CE



- Versiones de torre / Tower versions
- TR 8R + TR 12R + TN 12R + 2TN 4R
 - TR 8R + 2TN 12R + 2TN 4R
 - TR 8R + TN 12R + 5TN 4R
 - TR 8R + 8TN 4R
 - 2TR 8R + 6TN 4R
 - TR 12R + TN 12R + 4TN 4R
 - TR 12R + 2TN 12R + 1TN 4R
 - 2TR 12R + TN 12R + 1TN 4R
 - TR 12R + 7TN 4R
 - 2TR 12R + 4TN 4R

Altura máxima bajo gancho
sin arriostrar (m). Sin cabina aumentar 2 m.
Maximum height under hook
without fastening. Without cabin increase 2 m.

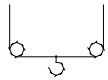
SR	41,37	40,03	41,19
DR	41,07	39,73	40,89

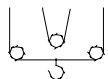
TM 1.18	137.35.000
BTX 38R	137.20.000
BEX 38R	137.23.000

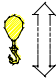
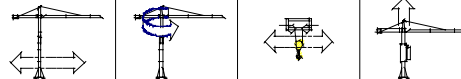


JASO EQUIPOS DE OBRAS, S.A.

Fecha / Date: 23-09-02 - Reservado el derecho a modificaciones sin previo aviso / Subject to modification, without previous warning

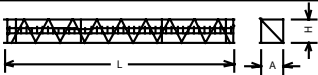
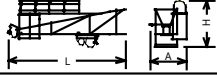
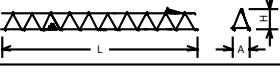
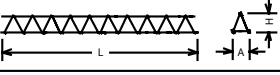
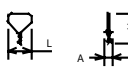
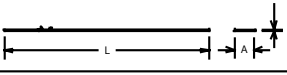
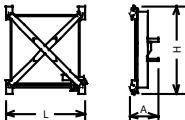
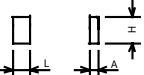

	(kg)	Alcance del gancho (m)						Hook reach (m)		2500 kg a
		50	45	40	35	30	25			
PLUMA JIB	50 m	1300	1470	1680	1950	2315	2500			27,94 m
	45 m	—	1500	1715	1990	2360	2500			28,45 m
	40 m	—	—	2000	2315	2500	2500			32,65 m
	35 m	—	—	—	2500	2500	2500			35 m
	30 m	—	—	—	—	2500	2500			30 m
	25 m	—	—	—	—	—	2500			25 m

	(kg)	Alcance del gancho (m)						Hook reach (m)			2500 / 5000 kg a
		50	45	40	35	30	25	20	18		
PLUMA JIB	50 m	1150	1320	1530	1800	2165	2500 / 2670	2500 / 3430	2500 / 3850	26,48 / 14,15 m	
	45 m	—	1350	1565	1840	2210	2500 / 2725	2500 / 3500	2500 / 3930	26,97 / 14,41 m	
	40 m	—	—	1850	2165	2500 / 2590	2500 / 3180	2500 / 4070	2500 / 4565	30,94 / 16,53 m	
	35 m	—	—	—	2350	2500 / 2805	2500 / 3440	2500 / 4390	2500 / 4920	33,17 / 17,73 m	
	30 m	—	—	—	—	2500 / 2900	2500 / 3555	2500 / 4535	2500 / 5000	30 / 18,27 m	
	25 m	—	—	—	—	—	2500 / 3700	2500 / 4720	2500 / 5000	25 / 18,95 m	

CARACTERÍSTICAS DE MECANISMOS				MECHANISMS FEATURES				
MECANISMOS MECHANISMS	* opcional optional 							
	EJ 2570		* EJ 2570 VF		TGJ 720 M	OJR 908	TCL 460	TH 1010
kW	18,4		18,4		5,5	2 x 4	3	7,4
VELOCIDADES SPEEDS	SR 1250kg 2500kg	70/35/8,8 m/min 35/8,8 m/min	SR 900kg 2500kg	0...72 m/min 0...36 m/min	20 m/min	0...0,8 r.p.m. st./min	60/30 m/min	1 m/min
	DR 2500kg 5000kg	35/17,5/4,4 m/min 17,5/4,4 m/min	DR 1800kg 5000kg	0...36 m/min 0...18 m/min	Potencia necesaria con... Required power with... EJ 2570 } EJ 2570 VF } 34,9 kW			
Max. recorrido gancho Maximum hook course	SR 129m 3 capas/ layers 177m 4 capas mAx./ max. layers		SR 119m 3 capas/ layers 256m 6 capas mAx./ max. layers		380V 50Hz			
	DR 64m 3 capas/ layers 88m 4 capas mAx./ max. layers		DR 59m 3 capas/ layers 128m 6 capas mAx./ max. layers					

	LASTRES INFERIORES		LOWER BALLASTS		
Composición torre Tower composition	1 x TN 12R	2 x TN 4R 1 x TN 12R	1 x TN 4R 2 x TN 12R	2 x TN 4R 2 x TN 12R	2 x TN 4R 2 x TN 12R 1 x TR 8R
Altura bajo gancho (m) Height under hook (m)	13,65	21,57	29,49	33,45	41,37
Lastre base (kg) Base ballast (kg)	24600	32800	41000	49200	57400



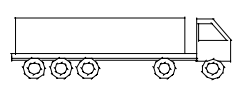
DENOMINACION DENOMINATION		L (m)	A (m)	H (m)	Peso (kg) Weight (kg)	
Torre Tower	{ TN 4R TR 8R TN 12R TR 12R		4,146	1,186	1,186	1168
			8,074	1,186	1,186	2570
			12,009	1,186	1,186	2908
			12,009	1,186	1,186	3710
Torre asiento pista. Base punta torre y orientación. Slewing table. Tower head base and slewing mechanism			3,098	1,754	2,140	2723
Punta de torre Tower head			6,119	1,632	2,441	2142
Conjunto asiento pista+punta torre+orientación Slewing table assembly+Tower head+slewing mechanism			8,125	1,963	2,441	4865
Tramo de pluma Jib section	{ I-SR I-DR		10,140	1,000	1,135	890
			10,140	1,000	1,135	1015
Tramo de pluma Jib section	{ II-SR II-DR		10,127	0,860	1,137	890
			10,127	0,860	1,137	1010
Tramo de pluma Jib section III			10,127	0,860	1,035	805
Tramo de pluma Jib section IV			10,127	0,860	1,175	867
Tramo de pluma Jib section V			5,237	0,860	1,125	310
Tramo de pluma Jib section VI			5,237	0,860	1,035	250
Polipasto Hook assembly	{ SR DR		0,760	0,288	0,962	134
			0,760	0,288	1,395	171
Carro Crab	{ SR DR		1,008	1,288	0,659	86
			1,070	1,250	0,815	176
Contrapluma Counterjib			12,261	1,442	0,430	1710
Plataforma y cabina Platform and cabin			3,686	1,63	2,25	820
Testeros con traslación grúa Base beams with travelling mechanism	{ Estacionaria III Traslaci/En		4,300	1,479	4,300	3802
			4,203	1,721	4,610	5230
Contrapeso Counterweight	{ Grande / Big Mediano / Medium Pequeño / Small		1,080	0,500	2,025	2360
			1,080	0,320	1,465	1140
			1,080	0,320	0,922	700
Lastre Ballast			4,000	0,340	1,300	4100
Torre de montaje Jacking cage			7,144	1,760	1,710	3105



COMPOSICIONES DE TORRE / TOWER COMPOSITIONS		J65MAC					
TORRES / TOWERS	ALTURA / HEIGHT	Diagrama de la torre		ALTURA / HEIGHT	TORRES / TOWERS		
1	3,73	TN 4R	137.32.000	TN 4R	3,73	1	
2	7,73	TN 4R		TN 12R			
3	19,73	TN 12R	137.31.000	TN 12R	15,73	2	
4	31,73	TN 12R		TN 12R	27,73	3	
5	39,73	TR 8R	137.30.000	TR 8R	35,73	4	
		J90/J65MAC		J90/J65MAC		J90/J65MAC	
		T 3-90	133.32.000	T 3-90	39,56	5	
		TD 3-90	133.32.500	TD 3-90			
		AR 12		137.21.000	42,56	6	
		ARD 12		137.21.800	45,56	7	
		9		51,56	48,56	8	
		AN 90		133.21.000	57,94	10	
		AND 90		133.21.800	62,26	11	
		TN 17/T 3-90		139.36.000	53,62	9	
		TN 17	141.31.000	TN 17	59,94	10	
		TND 17	141.31.500	TND 17	66,58	12	
		AN 17		141.21.000	70,90	13	
		AND 17		141.21.800			
		ANDC 17		141.21.700			
		TR 17A		141.30.400			
		TRD 17A		141.30.800			
		TR 17		141.30.000			
		TRD 17		141.30.500			
		AR 17		141.21.500			
		ARD 17		141.21.900			
		ARDC 17		141.21.600			

Transporte grúa autoestable con traslación y sin lastre.
Free standing crane transport with travelling base without base ballast.

En camiones / In trucks



3 unidades / 3 units

En contenedores / In containers

(A)

BOX

1 unidades / 1 units

OPEN TOP

2 unidades / 2 units

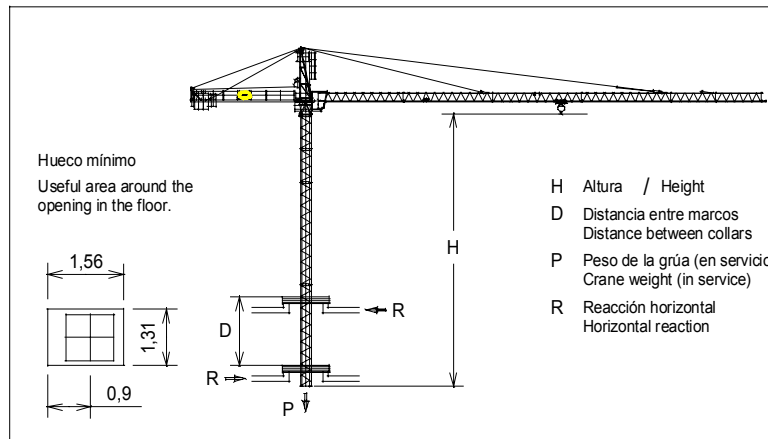
(B)

BOX

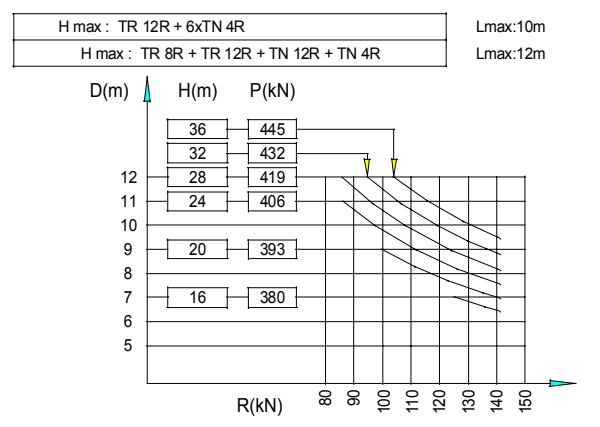
2 unidades / 2 units

HIGH CUBE

1 unidades / 1 units



- H Altura / Height
- D Distancia entre marcos / Distance between collars
- P Peso de la grúa (en servicio) / Crane weight (in service)
- R Reacción horizontal / Horizontal reaction



JASO EQUIPOS DE OBRAS, S.A.

Ctra./Rd. Madrid - Irún Km. 415
20.213 IDIAZABAL (Gipuzkoa)
ESPAÑA / SPAIN
P.O. Box, 23 - 20.200 BEASAIN

Tel. +34 943 - 18 70 00
Fax. +34 943 - 18 70 20
E-mail: jaso@jaso.com
http://www.jaso.com

Fecha / Date: 23-09-02
Reservado el derecho a modificaciones sin previo aviso / Subject to modification, without previous warning

DELEGACION / DELEGATION